



# THOMSON REUTERS PORTIA INVESTMENT ACCOUNTING

A GLOBAL PLATFORM THAT SUPPORTS YOUR ENTIRE ENTERPRISE



THOMSON REUTERS™

Every part of your organization needs results from your investment accounting system. To get true leverage across your firm, you need a system that's reliable, secure and proven. Thomson Reuters PORTIA offers an open and configurable platform to meet the unique needs of multiple business lines and regions through a single solution that optimizes your operations.

As an enterprise-wide solution, Thomson Reuters PORTIA supports the needs of your entire business, across regions, business lines and investment strategies. Its open architecture and flexible configuration supports multiple accounting standards and regulatory requirements. Whether you are a long only asset manager, focused on alternative investments or, somewhere in between, Thomson Reuters PORTIA's global asset class support and deep multi-currency capabilities support and grow with your business. This is why Thomson Reuters PORTIA is the choice of more than 300 investment managers in 45 countries who manage assets totaling more than US\$15 trillion.

As the needs of the investment management marketplace change, we are constantly evolving to help you manage these changes. Whether it's meeting international accounting standards such as US-GAAP or IFRS, or the creation of a new security type, our scalable solution can be customized for you and your firm. We understand the specific investment accounting requirements of your business including:

- Portfolio valuation
- Multiple cost basis for amortization and accretion
- Tax lot and average cost accounting methods
- Multiple selling rules
- Cost accounting options and basis
- Gain/Loss realization
- Income and corporate actions processing
- Cash management, receivables/payables
- Closed period accounting
- Historical positions
- Integrated investment ledger
- Tax withholding

**THOMSON REUTERS PORTIA FOR INSURANCE**

Thomson Reuters PORTIA for Insurance supports insurance-specific firms and those firms who have insurance as a part of their business. It provides comprehensive data for regulatory reporting, support for insurance-specific ratings and integration with standard reporting packages (e.g. Fiserv Insurance Solution's Freedom). The investment ledger can maintain multiple bases, providing GAAP, statutory and tax reports with the click of a button. Insurance companies can efficiently manage their accounting processes by leveraging Thomson Reuters PORTIA's accounting capabilities, including:

- NAIC regulatory schedules, exhibits and reports
- Cash processes and reconciliation
- Income processing and reconciliation
- Corporate actions and reorganizations
- Built-in reconciliations
- Statutory and multi-basis
- Receivable and payable tracking
- Integrated investment ledger
- Closed period accounting

**THOMSON REUTERS PORTIA FOR MULTI-STRATEGY INVESTMENTS**

Thomson Reuters PORTIA supports the increasing complexity of multi-strategy global investments. Its innovative design provides the portfolio accounting tools needed to value and analyze complex securities. Ease of integration to the industry's leading pricing data vendors, and full multi-currency processing capabilities. In order to stay competitive you need extensive support, including:

- Comprehensive support for derivatives, syndicated loans, swaps, repos and structured products
- Multi-currency, multi-asset class, multi-strategy functionality
- Open architecture means data can easily be extracted and fed to any risk system
- Automated interface to integrated seamlessly with prime broker or 3rd party custodians
- One streamlined management process for multi-legged securities
- Real time P&L to support daily trading and decision making
- Comprehensive reporting to support analysis including strategy level reporting
- Integrated Investment Ledger

**THOMSON REUTERS PORTIA FOR WEALTH MANAGEMENT**

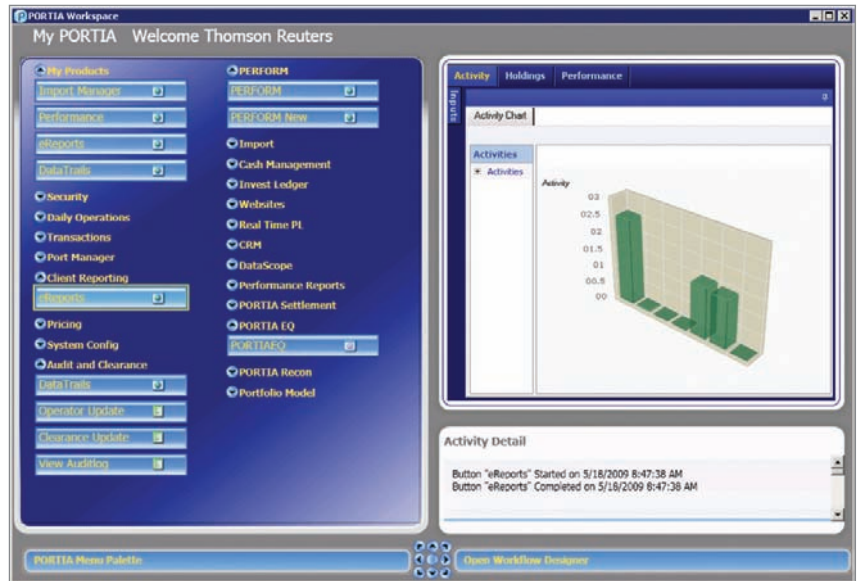
Thomson Reuters PORTIA understands the complex needs of the wealth management marketplace. We have developed integrated solutions that allow wealth managers access to the critical investment accounting information they need. Our operational and technological capabilities give our clients confidence they're getting the proven investment accounting tools they need to deliver investment performance to their clients more efficiently and cost-effectively. Grow your business with the tools you need to support your clients, including:

- Access to a highly scalable solution for significant account levels and volumes
- Maintain an independent book and records, thus removing the dependence on any specific external service
- Utilize a flexible client billing capability
- Calculate, track and report standard index performance calculation in accordance with GIPS standards
- Compare your portfolio against any standard index or your own blended benchmark
- Provide real-time portfolio analysis
- Perform simple or complex performance analysis with presentation quality reporting packages
- Choose from customizable tax handling for a variety of account needs
- Integrate with Market Leading CRM packages
- Create user defined compliance rules on both a transactional and holdings basis
- Access the ability to run ad hoc, "what if " analysis over single or multiple portfolios

**THOMSON REUTERS PORTIA FOR MUTUAL FUNDS**

Thomson Reuters PORTIA's fund accounting capabilities is designed to optimize your fund processing across multiple business functions. It supports your unique individual requirements and daily workflows enabling you to strike and publish daily NAVs, apply corporate actions to a fund, and deliver daily client and management reports. Specific functionality includes:

- NAV calculation
- Portfolio and general ledger accounting
- Multi-class and multi-sector accounting
- Cash allocation and rebalancing
- Multi-cost basis
- Fund of funds
- NAV trial balance
- Post-trade compliance reporting
- Financial reports



**Reliable.Secure.Proven.PORTIA**

To learn more contact:

**North America:**

+1 617 856 2700

**EMEA:**

+44 (0)20 7542 6960

**Hong Kong:**

+852 3762 3300

[portia@thomsonreuters.com](mailto:portia@thomsonreuters.com)

[tf-portfolio solutions.net](http://tf-portfolio solutions.net)

© Thomson Reuters 2009. All rights reserved. Reproduction or redistribution of Thomson Reuters content, including by framing or similar means, is prohibited without the prior written consent of Thomson Reuters. 'Thomson Reuters' and the Thomson Reuters logo are registered trademarks and trademarks of Thomson Reuters and its affiliated companies. 48000583.



**THOMSON REUTERS**